

Bug Hotel Locations

The aim is to have one bug hotel in each ward. As well as following the recommendations below the proposals are for locations where residents will see them.

Recommendations on where to position a bug hotel

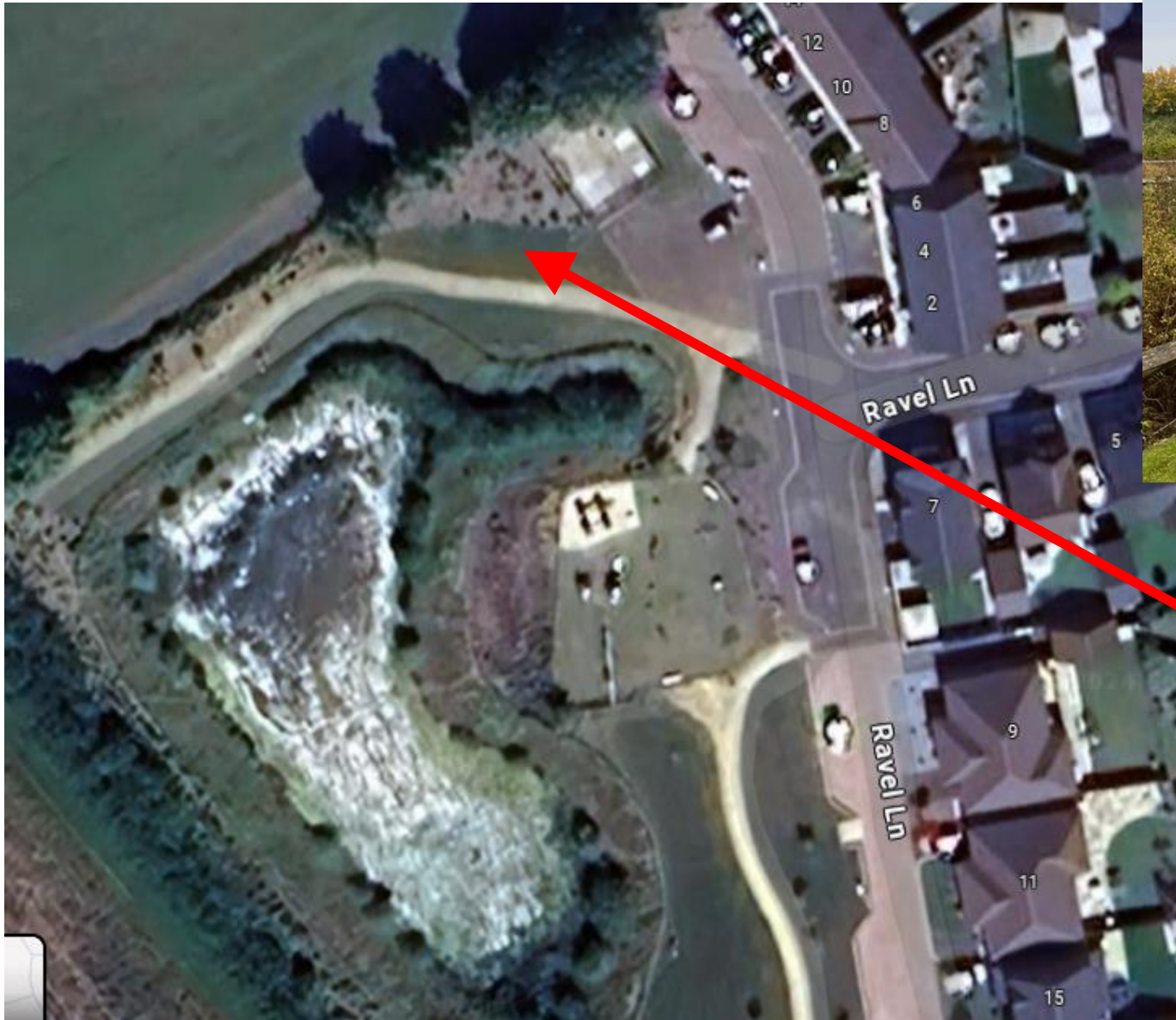
- Location: Sunny, warm, sheltered from wind
- Orientation: south
- Height: 75 cm or higher
- Forage plants: Insect-friendly plants within a radius of 300 m

Stoke Grange



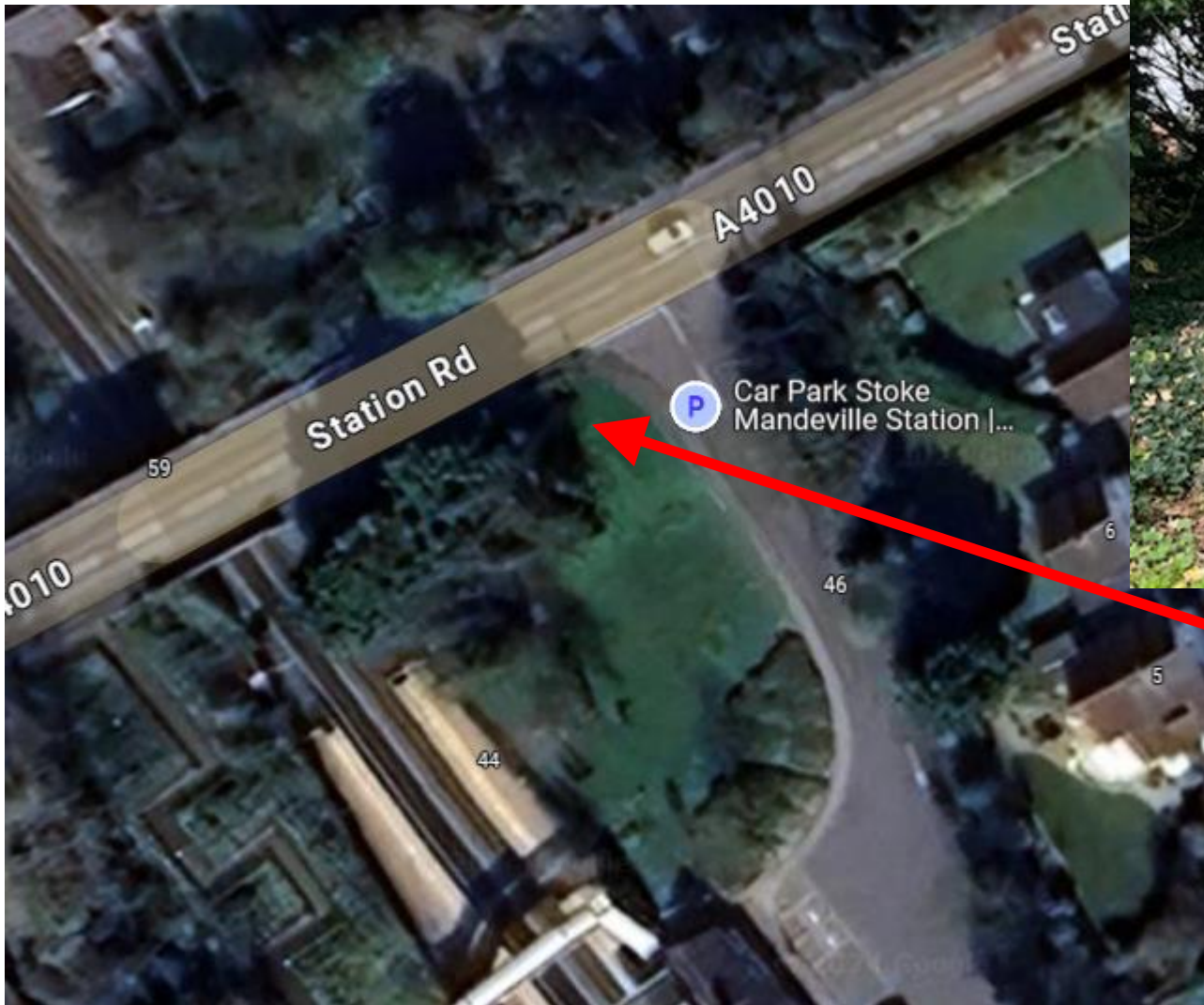
- Location – somewhere along this hedge
- Facing south
- Sheltered by the hedge behind
- Gardens/shrubs/trees nearby for foraging
- On a path so people will walk past and see it

Stoke Leys



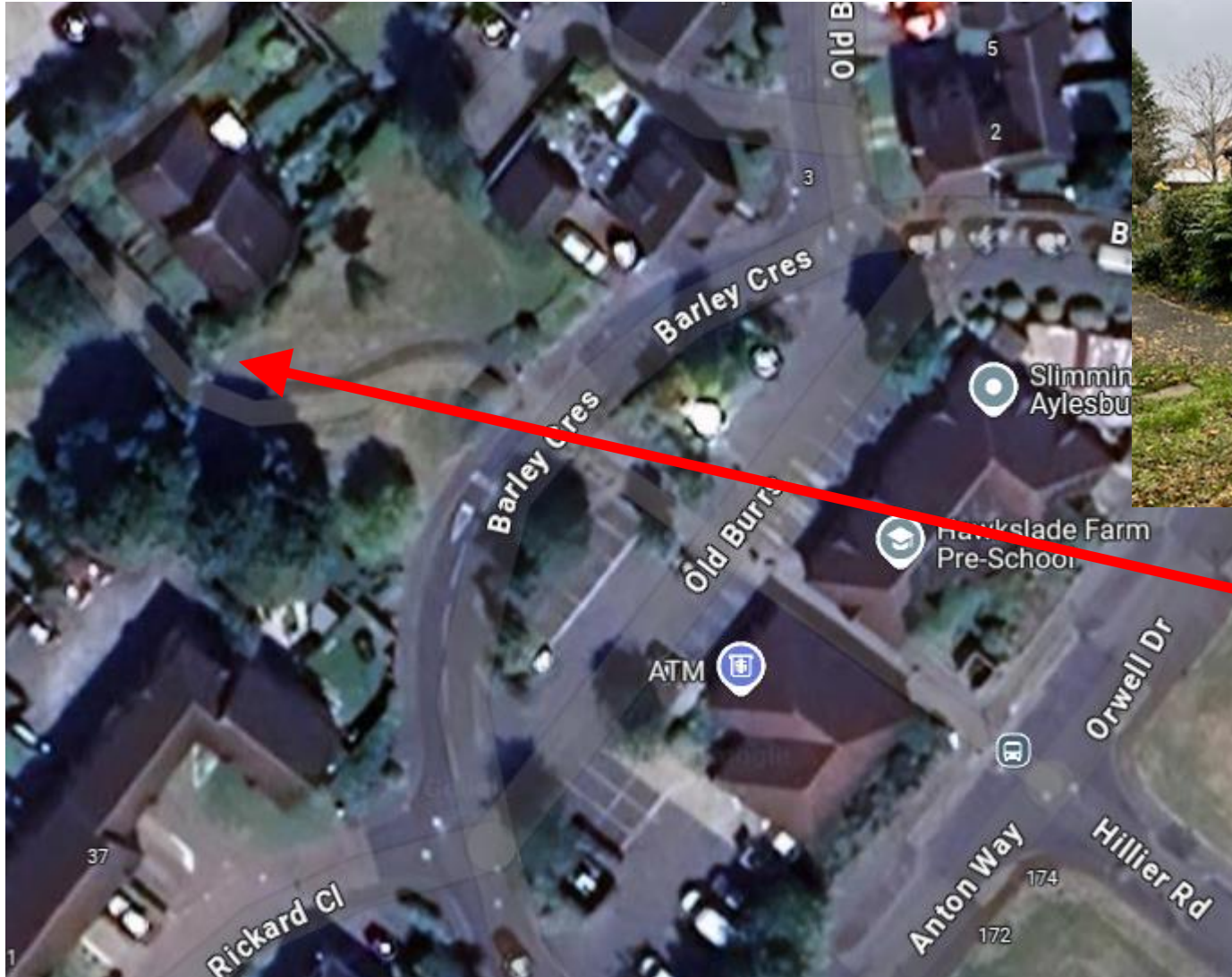
- Location – somewhere on this grass area
- Facing south
- Currently only partially sheltered but the shrubs behind will grow and provide more shelter over time.
- Gardens/shrubs/trees nearby for foraging
- On a path so people will walk past and see it and also near playground

Village



- Location – on grass area
- Facing south
- Sheltered from West and partially from North
- Bee friendly bulbs planted on verge and flowering shrubs around statue
- People leaving station will see it.

Hawkslade



- Location – on grass area next to path with shrubs behind
- Facing south
- Sheltered North by house and shrubs
- Lots of shrubs nearby and gardens
- People walking along path will see it.